

**PROPOSED NEW BUTLER GALLERY AT  
EVAN'S ALMS HOUSE,  
BARRACK LANE, KILKENNY**

---

**VOLUME 1  
ARCHITECTURAL RECORD & INVENTORY**



**July 2010**

Prepared for McCullough Mulvin Architects

**CARRIG**  
BUILDING FABRIC CONSULTANTS

68 Dame Street, Dublin 2, Ireland T: +353 16715777 F: +353 16715544 E: [enquiries@carrig.ie](mailto:enquiries@carrig.ie) I: [www.carrig.ie](http://www.carrig.ie)

Carrig UK, 60 Newman Street, London, W1T 3DA, England T: +44 2074625312 F: +44 207323 4645 E: [London@carrig-uk.com](mailto:London@carrig-uk.com)

**TABLE OF CONTENTS**

**EXECUTIVE SUMMARY ..... 3**

**1 INTRODUCTION ..... 3**

**2 EXTERNAL ARCHITECTURAL RECORD ..... 4**

**3 INTERNAL ARCHITECTURAL INVENTORY .....15**

**APPENDIX 1 - LOCATION PLANS.....91**

## EXECUTIVE SUMMARY

This document forms part of a Conservation Report commissioned by Ruth O’Herlihy of McCullough Mulvin Architects, Setanta Place, Dublin. Carrig was employed to conduct an architectural record and condition assessment for the former Evan’s Home, Barrack Lane, Kilkenny City.

Evan Alms Home was built c.1818 as accommodation for “decayed servants” and is attributed to the Architect William Robertson (NIAH Record 12000216). The building has lain derelict for the past number of years and it is the intention of Kilkenny County Council to house the Butler art collection within its grounds as part of the creative re-use of the existing structure. The Alms House and associated gate lodge are individually designated as protected structures in the *Kilkenny City & Environs Development Plan 2008-2014* (RPS ref: B3 & B4 respectively).

Due to the large volume of information compiled as part of this comprehensive study the Conservation Report has been divided into two volumes;

- I. Volume One contains an External Architectural Record & Internal Inventory.
- II. Volume Two contains an External & Internal Condition Assessment with accompanying Recommendations. An Internal Schedule of Defects has been included as an addendum to Volume II.

## 1 INTRODUCTION

The architectural record and inventory was carried out on in two parts over the 2<sup>nd</sup> and 25<sup>th</sup> June 2010. The first part was to survey the exterior of the building with a view to making an architectural record of the structure, its materials, architectural detailing and existing setting (including boundary walls, entrance archway and ancillary structures).

The second element was to conduct a comprehensive interior architectural inventory providing a room-by-room inventory of the architectural finishes, features and fittings.

The external record and internal inventory have been presented in written and photographic form. Plan drawings are located in appendix 1 for the purposes of guiding the reader through the building.

## 2 EXTERNAL ARCHITECTURAL RECORD

### 2.1 Evan's Alms House

#### 2.1.1 Overview

Detached nine-bay two-storey former alms house founded 1818 on an H-shaped plan built to designs attributed to William Robertson (1770-1850) comprising seven-bay central block with three-bay pedimented breakfront to principle/west elevation and flanking wings to the north and south having pedimented breakfronts mid north and south elevations. Refurbished in-part for use as library c.1990, now vacant.

	
<p>Fig.1: Principle/west elevation of central block showing pedimented breakfront.</p>	<p>Fig.2: Aspect taken from the southwest showing the southern flanking wing to forefront.</p>
	
<p>Fig.3: South elevation of the southern flanking wing showing central pedimented breakfront.</p>	<p>Fig.4: Rear/east elevation to from the southeast.</p>

#### 2.1.2 Roof

Hipped natural slate roof (gabled to pedimented breakfronts) on an ashlar limestone eaves course. Slate laid in diminishing courses with rolled lead dressed ridge capping. Seven ashlar limestone chimney stacks with moulded limestone capping and variety of chimney pots including some early terracotta 'Dublin'-style cans; one cement rendered chimney stack to southern wing (possibly representing a modern rebuild). Sections of early-to-mid 20<sup>th</sup> century cast-iron half-round eaves gutter on wrought-iron

straight brackets, having elongated rounded hopper heads and round downpipes; modern tin and uPVC replacement goods to remainder.

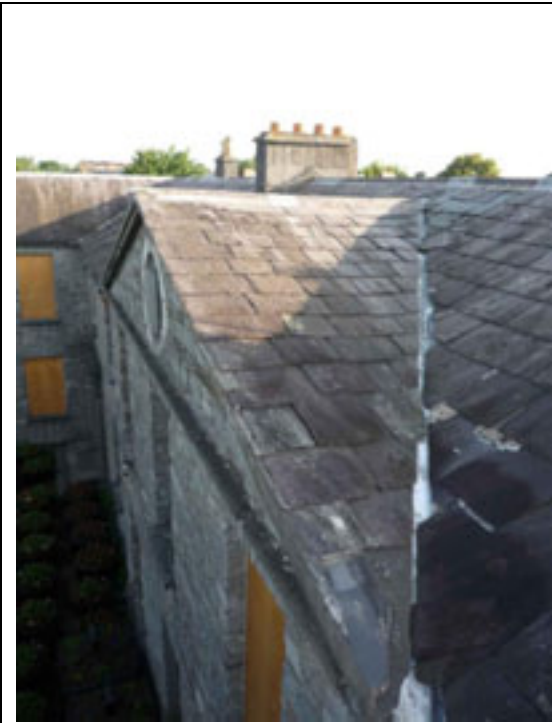


Fig.5: Natural slate roof laid in diminishing courses.



Fig.6: Rolled lead dressed ridge capping.

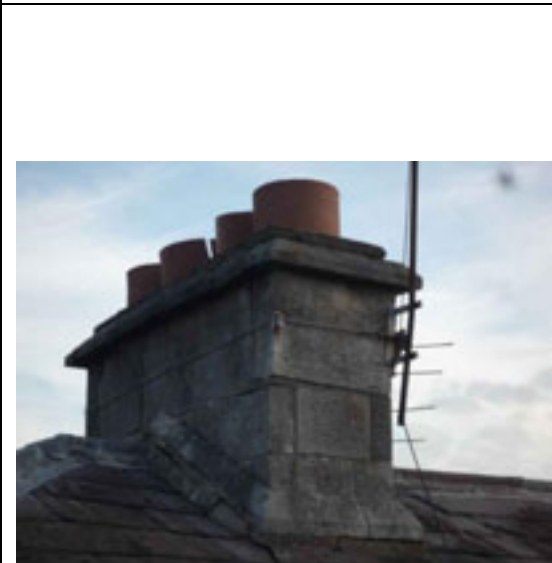


Fig.7: Ashlar limestone chimney stack over the southern wing.



Fig.8: Early-to-mid 20<sup>th</sup> century cast-iron hopper head and round downpipe.

### 2.1.3 Walls

Exposed random rubble limestone walls on an ashlar limestone plinth course having trace remains of surviving early lime-based harling to north and east elevations suggesting the building was originally rendered. Cement-based strap pointing to remaining elevations c.1990. Roughly dressed limestone quoins. Ashlar limestone horizontal and raking platbands with crowning plinth blocks to pedimented breakfronts having blank limestone plaque to tympana (plaque to pedimented breakfront to principle/west elevation within circular recessed panel). Inscribed stone dated '1542' built into coursing of northern wing (laid upside down) representing the salvage of stone from an earlier structure.



Fig.9: Traces of surviving lime based harling to east elevation with exposed aggregate of varying size.



Fig.10: Ashlar plinth course to base of wall - note the exposed rubble limestone walls to remainder.



Fig.11: Plaque to central pedimented breakfront of principle/west elevation set within circular recessed panel.



Fig.12: Carved stone dated '1542' possibly salvaged during construction of the Evan's Home from an earlier structure.

## 2.1.4 Windows

Square-headed window openings with tooled limestone cills, exposed limestone reveals (some rendered with a cement based material c.1990) and exposed roughly dressed limestone voussoirs. Windows to east and west elevations and to pedimented breakfronts of flanking wings set within full-height segmental-headed recessed panels. Five timber six-over-six sliding sash windows without horns to ground and first floor of the east elevation; two Wyatt windows to ground floor of east elevation set within segmental-headed recessed panels comprising six-over-six sliding sash windows without horns flanked by two-over-two sliding sashes; replacement timber casement windows c.1990 to remainder. Blind window openings to pedimented breakfront of principle/west elevation and to the north and south elevations of the flanking wings having tooled limestone cills and trace remains of rendered and painted trompe-l'oeil window mimicking timber sliding sashes (to north elevation of northern wing).



Fig.13: Early timber six-over-six sash window to the east elevation.

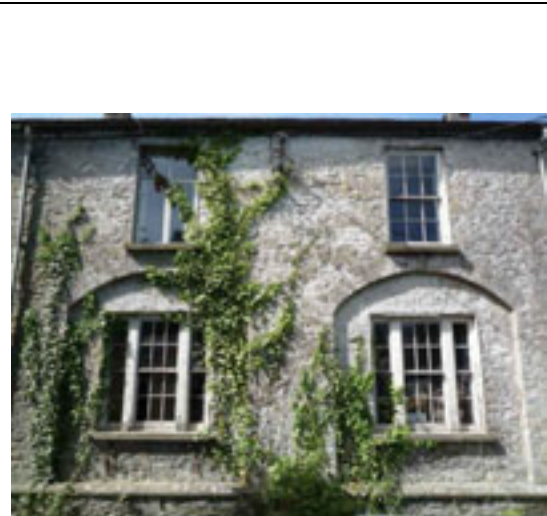


Fig.14: Wyatt windows to east elevation set within segmental-headed recesses.

	
<p>Fig.15: Blind window opening to the south elevation of the southern wing.</p>	<p>Fig.16: Traces of trompe-l'oeil window to blind opening to the north elevation of the northern wing.</p>

### 2.1.5 Doors

Two identical square-headed door openings to the principle/east elevation reflecting the segregation of male and female residents having ashlar limestone Greek revival Doric doorcases. Comprising part-fluted engaged columns supporting a dentiled entablature, blank frieze and overhanging modillioned cornice. Two steps to doorway with limestone flags and cast-iron boot scraper to southernmost door. Double-leaf timber raised-and-fielded panelled doors comprising two vertical panels with one horizontal panel to centre. Early thumb latch ironmongery. Two-square-headed doorways to the rear/east elevation having ashlar limestone Greek revival doorcases. Comprising recessed panelled pilasters supporting a pediment with crowing arcoterion. Single-leaf timber raised-and-fielded panelled doors comprising four vertical panels with one horizontal panel to centre. Early thumb latch ironmongery. Two former window opes at first floor to the north and south elevations of the south and north wings (respectively) were altered for use as fire escape exits c.1990. These opes now carry timber and glazed single-leaf doors with glazed overlights. External steel fire escape stairs have been fixed to these elevations.





Fig.17: Greek revival doorcase to principle/west elevation.



Fig.18: Part fluted engaged Doric column to the principle/west elevation.



Fig.19: Cast-iron boot scraper to the southernmost door to the principle/west elevation.



Fig.20: Doorcase to rear/east elevation. Note the raised-and-fielded panelled door.



Fig.21: Early thumb-latch to rear/east elevation.



Fig.22: Emergency fire exit stair and door (former window ope) to northern wing.

## 2.2 Gate Lodge & Gateway

Attached two-bay single-storey gate lodge built c.1820 with single-storey porch/addition to north and attached outbuildings to east. Hipped replacement man-made slate roof (gabled to east) having clay ridge tiles, smooth rendered chimney stack (with Dublin-style cans) and replacement metal rainwater goods. Painted smooth rendered walls. Square-headed window opening in segmental-headed recess with painted cut-stone sills, and replacement timber casement windows. Square-headed door opening to west elevation with cut-stone step giving access from Barrack Lane to grounds of Evan's Home having timber battened door; square-headed door opening to the single-storey porch having timber panelled door.

Random rubble limestone gateway to northwest of gate lodge facilitating vehicle access from Barrack Lane to the grounds of Evan's Home built c.1820 comprising pointed-arch opening having chamfered ashlar limestone voussoirs and surround (reinforced with concrete to north elevation). Modern double-leaf metal gate.



Fig.23: West elevation of gate lodge. The door (left of image) gives access to the grounds of Evan's Home and not the interior of the lodge itself.



Fig.24: North elevation of gate lodge showing projecting porch.



Fig.25: Gateway giving access from Barrack Lane.



Fig.26: Chamfered limestone surround to archway.

### 2.3 Boundary Wall

Random rubble boundary wall enclosing site representing variety of building phases and incorporating discernable medieval fabric to the west and south. Square-headed pedestrian gate to southern section giving access to St. Johns Graveyard having modern timber battened gate. Two pedestrian openings in western section giving access to the car park of the Carnegie Library (having wrought-iron single-leaf gate) and to the neighbouring property (having pointed arched surround and wrought-iron single-leaf gate). Relieving arches/blocked pointed-arches representing medieval fabric incorporated within the lower portion of the western section of boundary wall.



Fig.27: Boundary wall to the east.



Fig.28: Boundary to the north of the site taken from Bath Lane.



Fig.29: Pointed-arch opening in the western section of wall.



Fig.30: Relieving/former pointed-arched openings to the western section of the boundary wall.

## 2.4 Outdoor Sanitary Blocks

Two attached corner sited former sanitary blocks on triangular footprints representing male and female facilities located to the extreme northeast and southeast of the site. The block to the northeast was converted for use as a store c.1990 comprising a modern corrugated roof supported on random rubble limestone walls. Round-headed brick-lined archway to the southwest wall having a cast-iron gate and modern secondary metal sheet door. A blocked opening located in the east wall may relate to an earlier structure or may represent a former gateway in the boundary wall. The internal space is subdivided into three by limestone walls. The block to the southeast is heavily overgrown but appears to echo that to the northeast.



Fig.31: Former sanitary block to the northeast of the site. Note the round-headed door opening.



Fig.32: Brick-lined arch giving access to the former sanitary block to the northeast of the site.



Fig.33: Interior of the former sanitary block to the northeast of the site. Note the limestone wall subdividing the space.



Fig.34: Archway giving access to the heavily overgrown former sanitary block located to the southeast of the site.

## 2.5 Ancillary Structures

The site is currently used by Kilkenny City Councils Park Department and in addition to the historic structures detailed above includes three portacabins/sheds; a polytunnel, a lean-to glass house built against the northern boundary wall; and a number of concrete block cold frames.



Fig.35: Temporary potting shed to west of the site.



Fig.36: Polytunnel to the north of Evan's Home.



Fig.37: Lean-to glass house to the northwest of site (abutting boundary wall).



Fig.38: Blockwork cold frames to the west of site.

### 3 INTERNAL ARCHITECTURAL INVENTORY

[See appendix 1 for Location Plan]

#### 3.1 Room G01

- Location:** West facing room located within the north wing.
- Floors:** Limestone flag floor.
- Walls:** Bull nose skirting to south and east walls. Wallpaper over plaster walls to north, south and east. Dry-lining to west wall.
- Doors:** Square-headed doorway in south wall giving access to G08. Timber architrave to floor. Single-leaf timber door with six panels having narrow panels to top rail. Bakelite door knob.
- Square-headed doorway in south wall giving access to G10. Timber architrave to floor. Single-leaf timber door with six panels having narrow panels to top rail. Modern handle.
- Windows:** Square-headed window opening in the west wall. Timber architrave to cill set over projecting apron (papered over). Flat reveals with timber folding leaf shutters (over-painted) having three panels each. Flat soffit. Timber casement window c.1990.
- Ceiling:** Plaster and painted ceiling. Bakelite light fitting.
- Features:** Projecting chimney breast to the east wall having painted stone surround and timber mantel shelf. Originally conceived with a round-headed opening now altered to form a square-headed opening. Hob grate. Modern tiled hearth.



Fig.39: Aspect of room taken from the northwest.



Fig.40: Limestone flag floor.



### 3.2 Room G02

Location: North facing room located within the north wing.

Floors: Linoleum over limestone flag floor.

Walls: Bull nose skirting. Wallpaper over plaster walls.

Doors: Square-headed doorway in south wall giving access to G08. Timber architrave to floor. Single-leaf timber door with six panels having narrow panels to top rail. Bakelite door knob.

Windows: Square-headed window opening in the north wall. Timber architrave to cill. Flat reveals with timber folding leaf shutters (over-painted) having three panels each. Flat soffit. Timber casement window c.1990.

Ceiling: Modern ceiling tiles (possibly over original plaster). Bakelite light fitting.

Features: Projecting chimney breast to the west wall having painted stone surround and timber mantel shelf. Originally conceived with a round-headed opening now altered to form a square-headed opening. Hob grate.





Fig.43: Aspect of room taken from the northeast.



Fig.44: Timber panelled door giving access to G08.



Fig.45: Window opening with surviving timber joinery. Note the replacement casement window.



Fig.46: Painted stone fireplace with timber mantel shelf.

### 3.3 Room G03

Location: North facing room located within the north wing.

- Floors: Linoleum over possible concrete floor.
- Walls: Bull nose skirting. Wallpaper over plaster walls.
- Doors: Square-headed doorway in south wall giving access to G08. Timber architrave to floor. Single-leaf timber door with six panels having narrow panels to top rail. Timber door knob.
- Square-headed doorway in east wall giving access to closet. Timber architrave to floor. Single-leaf timber door with six panels having narrow panels to top rail. Ceramic door knob.
- Windows: Square-headed window opening in the north wall. Timber architrave to cill. Flat reveals with timber folding leaf shutters (over-painted) having three panels each. Flat soffit. Timber casement window c.1990.
- Ceiling: Plaster and papered ceiling. Bakelite light fitting.
- Features: Fireplace to east wall having painted stone surround and timber mantel shelf. Originally conceived with a round-headed opening now altered to form a square-headed opening. Hob grate. Modern limestone hearth.
- Closet built into east wall having three timber shelves.



Fig.47: Aspect of room taken from the north.



Fig.48: Single-leaf timber panelled door giving access to G08.



Fig.49: Window opening showing timber panelled shutters.

Fig.50: Fireplace to east wall having painted stone surround, timber mantel shelf and modern limestone hearth.

### 3.4 Room G04

- Location:** North facing room located within the north wing.
- Floors:** Linoleum over limestone flag floor.
- Walls:** Bull nose skirting. Wallpaper over plaster walls.
- Doors:** Square-headed doorway in south wall giving access to G08. Timber architrave to floor. Single-leaf timber door with five panels having horizontal panel to top rail. Metal door knob.
- Windows:** Square-headed window opening in the north wall. Timber architrave to cill. Flat reveals with timber folding leaf shutters (over-painted) having three panels each. Flat soffit. Timber casement window c.1990.
- Ceiling:** Papered ceiling (over plaster). Bakelite light fitting.
- Features:** Projecting chimney breast to the east wall having painted stone surround and timber mantel shelf. Originally conceived with a round-headed opening now altered to form a square-headed opening. Hob grate.
- Modern built-in coal bunker to east wall.



Fig.51: Aspect of room taken from the southeast.



Fig.52: Timber door with five panels giving access to G08.



Fig.53: Window opening with surviving timber joinery.



Fig.54: Painted stone fireplace with timber mantel shelf and hob grate.

### 3.5 Room G05

Location: East facing room located within the north wing.

Floors: Modern timber floor boards running east-west over concrete subfloor.

- Walls:** Bull nose skirting. Wallpaper over plaster walls.
- Doors:** Square-headed doorway in south wall giving access to G08. Timber architrave to floor. Single-leaf timber door with five panels having horizontal panel to top rail. No door knob.
- Square-headed doorway in south wall giving access to G06. Timber architrave to floor. Single-leaf timber door with six panels having narrow panels to top rail. Brass door knob.
- Windows:** Square-headed window opening in the east wall. Timber architrave to cill set over projecting apron. Flat reveals with timber folding leaf shutters (over-painted) having three panels each. Flat soffit. Timber casement window c.1990.
- Ceiling:** Papered ceiling (over plaster). Bakelite light fitting.
- Features:** Projecting chimney breast to the west wall with tiled fireplace c.1970 having a stepped mantel.



Fig.55: Aspect of room taken from the northeast.



Fig.56: Single-leaf timber panelled door giving access to G08.



Fig.57: Early timber window joinery. Note the architrave rests on a projecting window apron.

Fig.58: Fireplace to west wall c.1970.

### 3.6 Room G06

Location: Store located within the north wing.

Floors: Linoleum over concrete floor.

Walls: Plaster walls.

Doors: Square-headed doorway in north wall giving access to G05. Single-leaf timber door with six raised-and-fielded panels having narrow panels to top rail. Brass door knob.

Windows: None.

Ceiling: Plaster and painted ceiling.

Features: Three timber shelves.



### 3.7 Room G07

Location: Store located within the north wing.

Floors: Concrete floor.

Walls: Paper over plaster walls.

Doors: Square-headed doorway in west wall giving access to G08. Single-leaf timber door with six panels having narrow panels to top rail. No door knob.

Windows: None.

Ceiling: Plaster and painted ceiling.

Features: None.



### 3.8 Room G08

Location: South facing corridor located within the north wing.

Floors: Limestone flag floor.

Walls: Bull nose skirting. Plaster walls.

Doors: Square-headed doorway in north wall giving access to G01. Timber architrave to floor. Single-leaf timber door with six panels having narrow panels to top rail. Bakelite door knob.

Square-headed doorway in north wall giving access to G02. Timber architrave to floor. Single-leaf timber door with six panels having narrow panels to top rail. Bakelite door knob.

Square-headed doorway in north wall giving access to G03. Timber architrave to floor. Single-leaf timber door with six panels having narrow panels to top rail. Timber door knob.

Square-headed doorway in north wall giving access to G04. Timber architrave to floor. Single-leaf timber door with five panels having horizontal panel to top rail. Metal door knob.

Square-headed doorway in north wall giving access to G05. Timber architrave to floor. Single-leaf timber door with five panels having horizontal panel to top rail. Brass door knob.

Square-headed doorway in east wall giving access to G07. Timber architrave to floor. Single-leaf timber door with six panels having narrow panels to top rail. No door knob.



Square-headed doorway in south wall giving access to G11. Timber architrave to floor. Double-leaf timber door with three panels having narrow panels to top rail. Bakelite door knob.

Square-headed doorway in west wall giving access to G09. Timber architrave to floor. Single-leaf timber door with six panels having narrow panels to top rail and ribbed glazing to centre panels. No door knob.

Windows: Two square-headed window openings in the south wall. Timber architrave to cill. Flat reveals with timber folding leaf shutters (over-painted) having three panels each. Flat soffit. Timber casement windows c.1990.

Ceiling: Plaster ceiling. Bakelite light fitting.

Features: Belfast sink to south wall.  
Electric board to south wall.



Fig.63: Aspect of corridor taken from the east.



Fig.64: Limestone flag floor.

	
<p>Fig.65: Double-leaf doors giving access to</p>	<p>Fig.66: Belfast sink to south wall.</p>

### 3.9 Room G09

Location: W.C. located within the north wing.

Floors: Linoleum over concrete floor.

Walls: Plaster walls.

Doors: Square-headed doorway in east wall giving access to G08. Single-leaf timber door with six panels having narrow panels to top rail and ribbed glazing to centre panels. No door knob.

Windows: None.

Ceiling: Plaster and painted ceiling.

Features: Toilet with overhead wall-mounted cistern.

Vent grill to south wall.



### 3.10 Room G10

Location: Store located within the north wing.

Floors: Concrete floor.

Walls: Plaster walls.

Doors: Square-headed doorway in north wall giving access to G01. Single-leaf timber door with six raised-and-fielded panels having narrow panels to top rail. No door knob.

Windows: None.

Ceiling: Plaster and painted ceiling.

Features: None.



Fig.69: Aspect of room taken from the north.



Fig.70: Single-leaf door with raised-and-fielded timber panels giving access to G01.

### 3.11 Room G11

**Location:** Apsidal stairhall located within the central block having a cantilevered staircase rising from ground to first floor.

**Floors:** Linoleum over limestone flag floor. The floor is divided into two areas by flight of two limestone steps.

**Walls:** Bull nose skirting. Plaster walls.

**Doors:** Square-headed doorway in west wall giving access to the exterior. Timber architrave to floor. Double-leaf timber door with three panels having narrow panels to centre. Early latch ironmongery.

Square-headed doorway in north wall giving access to G08. Timber architrave to floor. Double-leaf timber door with three panels having narrow panels to top rail. Bakelite door knob.

Square-headed doorway in east wall giving access to the exterior. Timber architrave to floor following the curve of the room. Single-leaf timber battened door. Early ironmongery.

Square-headed doorway in south wall giving access to G12. Timber architrave to floor. Double-leaf timber door with three panels having narrow panels to top rail. Bakelite door knob.

Square-headed doorway giving access to the closet located beneath the staircase. Single-leaf timber door with two panels. No door knob.

**Windows:** None.

Ceiling: Plaster ceiling.

Features: Cantilevered limestone staircase with open strings ascending from ground to first floor. Wrought-iron balusters and curved volute newel supporting a metal handrail.

Closet located beneath staircase.

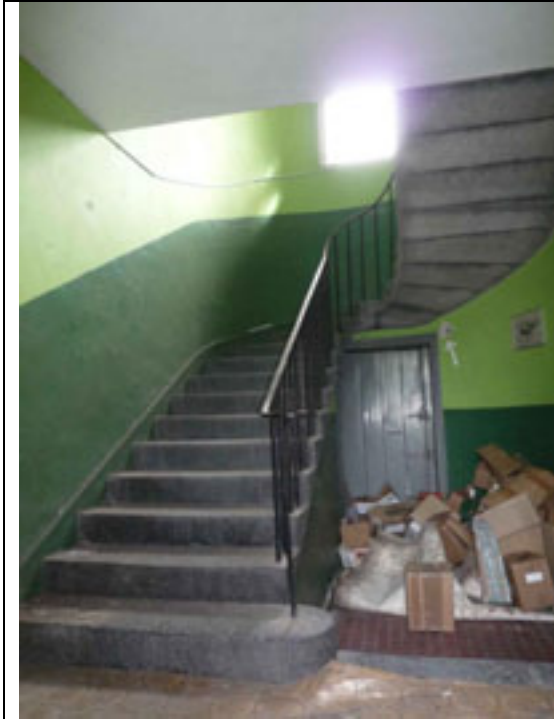


Fig.71: Cantilevered staircase rising from ground to first floor. Note the apsidal end to this room.



Fig.72: Limestone steps dividing the room in to two areas.



Fig.73: Double-leaf doors giving access to the exterior (front/west).

Fig.74: Door giving access to the exterior (rear/east). Note the architrave follow the curve of the room.

### 3.12 Room G12

- Location:** West facing corridor located within the central block.
- Floors:** Linoleum over concrete floor.
- Walls:** Timber wainscoting to elbow height with plaster and painted walls to remainder.
- Doors:** Square-headed doorway in north wall giving access to G11. Timber architrave to floor. Double-leaf timber door with three panels having narrow panels to top rail. Bakelite door knob.
- Square-headed doorway in east wall giving access to G13. Single-leaf timber door with six panels having narrow panels to top rail and glazing to centre panels. Bakelite door knob.
- Square-headed doorway in south wall giving access to G14. Timber architrave to floor. Single-leaf timber door with six panels having narrow panels to top rail. Brass door knob.
- Windows:** Square-headed window opening in the west wall. Timber architrave to cill. Flat reveals with timber folding leaf shutters (over-painted) having three panels each. Flat soffit. Timber casement window c.1990.
- Ceiling:** Plaster ceiling. Bakelite light fitting.
- Features:** Timber book shelves to all walls.



### 3.13 Room G13

Location: East facing room located within the central block.

Floors: Linoleum over concrete floor.

Walls: Bull nose skirting. Plaster walls.

Doors: Square-headed doorway in west wall giving access to G12. Single-leaf timber door with six panels having narrow panels to top rail and glazing to centre panels. Bakelite door knob.

Windows: Square-headed window opening in the east wall. Timber architrave to cill. Flat reveals with timber folding leaf shutters (over-painted) having three panels each. Flat soffit. Timber six-over-six sliding sash windows without horns.

Ceiling: Plaster ceiling. Bakelite light fitting and modern strip lighting.

Features: Projecting chimney breast to the south wall having painted stone surround and cast-iron register grate with tiled insert and cast-iron fender.

Timber book shelves to north, south and west walls.



Fig.77: Aspect of room taken from the west.



Fig.78: Single-leaf door giving access to G12 with glazed panels.

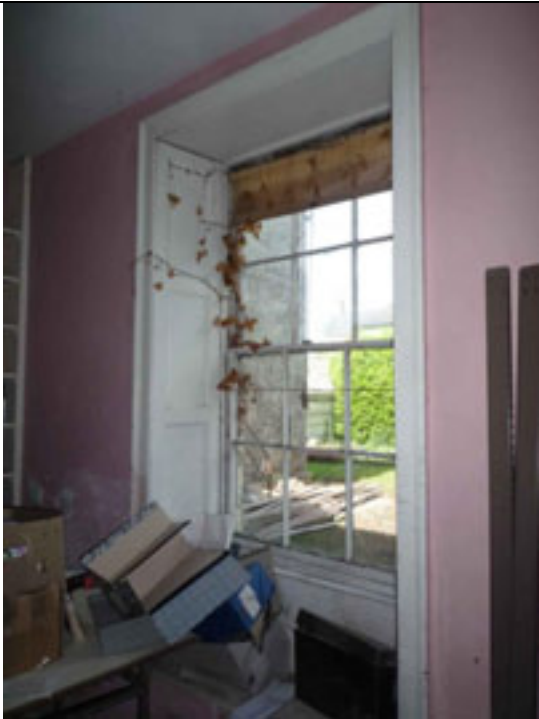


Fig.79: Early timber sliding sash window and associated joinery.



Fig.80: Painted stone fire surround with cast-iron register grate and fender.



### 3.14 Room G14

**Location:** Dual aspect room located within the central block with opes fronting on to the east and west.

**Floors:** Linoleum over concrete floor.

**Walls:** Modern timber skirting. Modern gypsum plaster having a course finish.

**Doors:** Square-headed doorway in north wall giving access to G12. Timber architrave to floor. Single-leaf timber door with six panels having narrow panels to top rail. Brass door knob.

Square-headed doorway in south wall giving access to G15 originally conceived as a larger opening (now partially blocked). Modern single-leaf flush panelled door Metal door handle.

**Windows:** Square-headed window opening in the west wall. Flat plaster reveals and soffit (no original joinery survives). Timber casement window c.1990.

Square-headed Wyatt window opening in the east wall. Timber architrave to cill. Flat reveals with timber folding leaf shutters (over-painted) having three panels each. Flat soffit. Timber six-over-six sliding sash windows without horns flanked by two-over-two sliding sashes.

**Ceiling:** Plaster ceiling. Bakelite light fitting and modern strip lighting.

**Features:** Projecting chimney breast to the north wall having modern brick fireplace c.1990.

Timber book shelves to north, south and west walls.



Fig.81: Aspect of room taken from the



Fig.82: Single-leaf door giving access to G12.

northwest.	
	
<p>Fig.83: Window opening to the west stripped of original window joinery.</p>	<p>Fig.84: Wyatt window with early sliding sash windows and timber joinery.</p>

### 3.15 Room G15

- Location:** Dual aspect room located within the central block with opes fronting on to the east and west.
- Floors:** Linoleum over limestone flag floor.
- Walls:** Timber wainscoting to elbow height with plaster and painted walls to remainder.
- Doors:** Square-headed doorway in north wall giving access to G14 originally conceived as a larger opening (now partially blocked). Modern single-leaf flush panelled door Metal door handle.
- Square-headed doorway in south wall giving access to G16. Timber architrave to floor. Door missing.
- Windows:** Square-headed window opening in the west wall. Flat plaster reveals and soffit (no original joinery survives). Timber casement window c.1990.
- Square-headed Wyatt window opening in the east wall. Timber architrave to cill. Flat reveals with timber folding leaf shutters (over-painted) having three panels each. Flat soffit. Timber six-over-six sliding sash windows without horns flanked by two-over-two sliding sashes.
- Ceiling:** Plaster ceiling. Bakelite light fitting and modern strip lighting.
- Features:** Projecting chimney breast to the south wall. Possible fireplace located behind modern panelling.

Timber book shelves throughout.



Fig.85: Aspect of room taken from the south.



Fig.86: Timber architrave indicating dimensions of original door opening in the north wall.



Fig.87: Door opening to south wall giving access to G16. Note the door is missing.



Fig.88: Early window joinery to the wyatt window to the east wall.

### 3.16 Room G16

- Location:** West facing corridor located within the central block. Room G16 and G18 were originally conceived as one room but were subdivided c.1980.
- Floors:** Linoleum over limestone flag floor.
- Walls:** Timber wainscoting to elbow height with plaster and painted walls to remainder.  
Timber and glazed partition to the south c.1980.
- Doors:** Square-headed doorway in north wall giving access to G15. Timber architrave to floor. Door missing.  
Square-headed doorway in west wall giving access to G17. Timber architrave to floor. Door missing.  
Square-headed doorway in south wall giving access to G18. Single-leaf timber and glazed door. Brass door knob.
- Windows:** Square-headed window opening in the west wall. Timber architrave to cill. Flat reveals with timber folding leaf shutters (over-painted) having three panels each. Flat soffit. Timber casement window c.1990.
- Ceiling:** Plaster ceiling. Bakelite light fitting.
- Features:** Timber book shelves to walls.

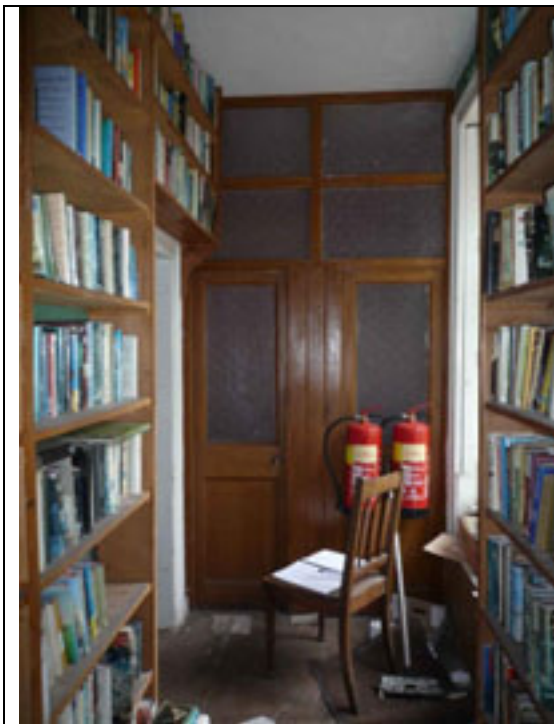


Fig.89: Aspect of corridor taken from the north. Note the timber and glazed partition wall.

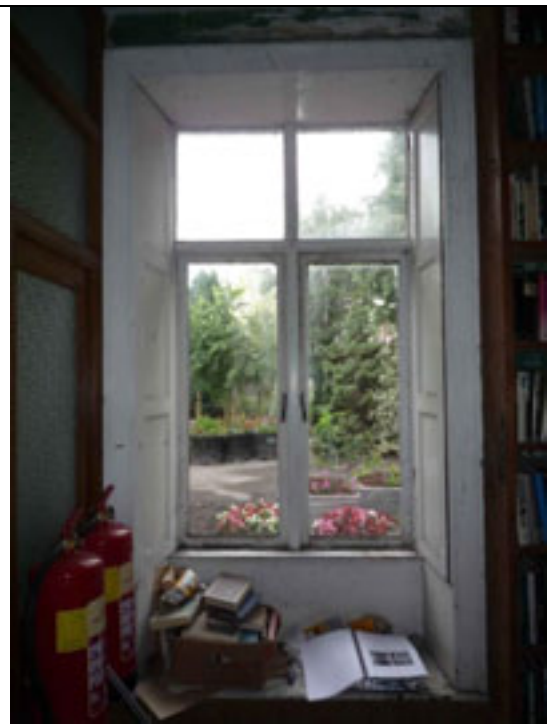


Fig.90: Early timber window joinery.

### 3.17 Room G17

- Location:** East facing room located within the central block.
- Floors:** Linoleum over limestone flag floor.

- Walls:** Plaster walls.
- Doors:** Square-headed doorway in north wall giving access to G16. Timber architrave to floor. Door missing.
- Windows:** Square-headed window opening in the east wall. Timber architrave to cill. Flat reveals with timber folding leaf shutters (over-painted) having three panels each. Flat soffit. Timber six-over-six sliding sash windows without horns.
- Ceiling:** Plaster ceiling. Bakelite light fitting and modern strip lighting.
- Features:** Projecting chimney breast to the north wall. Possible fireplace located behind modern panelling.  
Timber book shelves throughout.



Fig.91: Aspect of room taken from the west.

Fig.92: Panelled shutters and early timber sliding sash window.

### 3.18 Room G18

- Location:** W.C located within the central block. Room G16 and G18 were originally conceived as one room but were subdivided c.1980. This room originally gave access to G19.
- Floors:** Linoleum over concrete floor.
- Walls:** Plaster and painted walls.  
Timber and glazed partition to the south c.1980.
- Doors:** Square-headed doorway in south wall giving access to G16. Single-leaf timber and glazed door. Brass door knob.  
A blocked door opening in the south wall formerly gave access to G19.
- Windows:** None.

Ceiling: Plaster ceiling. Bakelite light fitting.  
 Features: Toilet with overhead wall-mounted cistern.  
 Wall mounted wash-hand basin.



### 3.19 Room G19

Location: Apsidal stairhall located within the central block having a cantilevered staircase rising from ground to first floor.

Floors: Linoleum over limestone flag floor. The floor is divided into two areas by flight of two limestone steps.

Walls: Bull nose skirting. Plaster walls.

Doors: Square-headed doorway in west wall giving access to the exterior. Timber architrave to floor. Double-leaf timber door with three panels having narrow panels to centre. Early latch ironmongery.

A blocked door opening in the south wall formerly gave access to G18.

Square-headed doorway in east wall giving access to the exterior. Timber architrave to floor following the curve of the room. Single-leaf timber with five panels having a horizontal panel to centre. Early ironmongery.

Square-headed doorway in south wall giving access to G22. Timber architrave to floor. Double-leaf timber door with three panels having narrow panels to top rail. Bakelite door knob.

Square-headed doorway giving access to the closet located beneath the staircase. Single-leaf timber door with two panels. No door knob.

Windows: None.

Ceiling: Plaster ceiling.

Features: Cantilevered limestone staircase with open strings ascending from ground to first floor. Wrought-iron balusters and curved volute newel supporting a metal handrail.

Closet located beneath staircase.

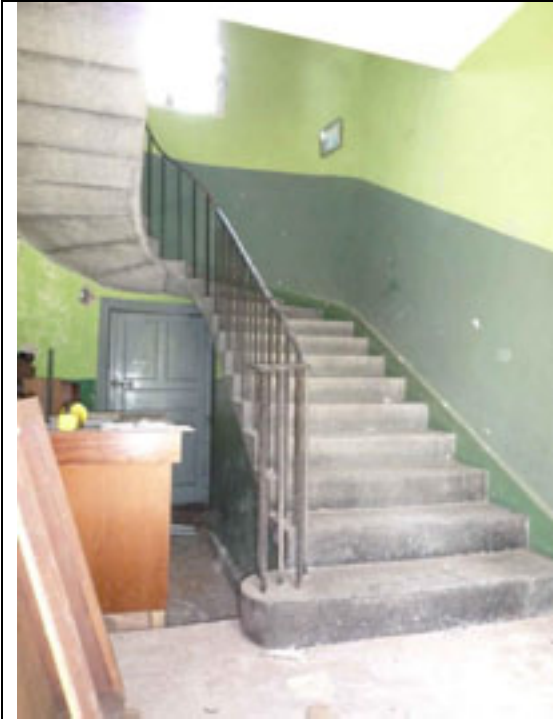


Fig.95: Cantilevered staircase rising from ground to first floor. Note the apsidal end to this room.



Fig.96: Double-leaf doors giving access to the exterior (front/west).



Fig.97: Timber panelled door giving access to the exterior (rear/east). Note the architrave follows the curve of the room.

Fig.98: Volute newel post terminating banister.

### 3.20 Room G20

Location: Store located within the south wing.

Floors: Concrete floor.

Walls: Plaster walls.

Doors: Square-headed doorway in south wall giving access to G29. Single-leaf timber door with five panels having horizontal panel to top rail. No door knob.

Windows: None.

Ceiling: Plaster and painted ceiling.

Features: Timber shelf.





### 3.21 Room G21

Location: W.C. located within the south wing.

Floors: Linoleum over concrete floor.

Walls: Papered and plastered walls.

Doors: Square-headed doorway in east wall giving access to G22. Single-leaf timber door with five panels having horizontal panel to top rail and ribbed glazing to centre panels. No door knob.

Windows: None.

Ceiling: Plaster and painted ceiling.

Features: Toilet.

Vent grill to north wall.



### 3.22 Room G22

Location: North facing corridor located within the south wing.

Floors: Limestone flag floor.

Walls: Bull nose skirting. Plaster walls.

Doors: Square-headed doorway in south wall giving access to G29. Timber architrave to floor. Single-leaf timber door with five panels having horizontal panel to top rail. Bakelite door knob.

Square-headed doorway in south wall giving access to G28. Timber architrave to floor. Single-leaf timber door with five panels having horizontal panel to top rail. Brass door knob.

Square-headed doorway in south wall giving access to G27. Timber architrave to floor. Single-leaf timber door with five panels having horizontal panel to top rail. Brass door knob.

Square-headed doorway in south wall giving access to G26. Timber architrave to floor. Single-leaf timber door with five panels having horizontal panel to top rail. Modern door handle.

Square-headed doorway in north wall giving access to G25. Timber architrave to floor. Single-leaf timber door with five panels having horizontal panel to top rail. Timber door knob.

Square-headed doorway in east wall giving access to G23. Timber architrave to floor. Single-leaf timber door with five panels having horizontal panel to top rail. No door knob.

Square-headed doorway in south wall giving access to G19. Timber architrave to floor. Double-leaf timber door with three panels having narrow panels to top rail. Bakelite door knob.

Square-headed doorway in west wall giving access to G21. Single-leaf timber door with five panels having horizontal panel to top rail and ribbed glazing to centre panels. No door knob.

Windows: Two square-headed window openings in the north wall. Timber architrave to cill. Flat reveals with timber folding leaf shutters (over-painted) having three panels each. Flat soffit. Timber casement windows c.1990.

Ceiling: Plaster ceiling. Bakelite light fitting.

Features: Belfast sink to north wall.  
Electric board to north wall.



Fig.103: Aspect of corridor taken from the east.



Fig.104: Limestone flag floor.



### 3.23 Room G23

Location: Store located within the south wing.

Floors: Linoleum over concrete floor.

Walls: Plaster walls.

Doors: Square-headed doorway in west wall giving access to G22. Single-leaf timber door with five panels having horizontal panel to top rail. No door knob.

Windows: None.

Ceiling: Plaster and painted ceiling.

Features: Two timber shelves.



### 3.24 Room G24

Location: Store located within the south wing.

Floors: Linoleum over concrete floor.

Walls: Plaster walls.

Doors: Square-headed doorway in south wall giving access to G25. Single-leaf timber door with five panels having horizontal panel to top rail. No door knob.

Windows: None.

Ceiling: Plaster and painted ceiling.

Features: Two timber shelves.



### 3.25 Room G25

- Location: East facing room located within the south wing.
- Floors: Linoleum over limestone flag floor.
- Walls: Bull nose skirting. Wallpaper over plaster walls.
- Doors: Square-headed doorway in north wall giving access to G22. Timber architrave to floor. Single-leaf timber door with five panels having horizontal panel to top rail. Timber door knob.  
  
Square-headed doorway in north wall giving access to G24. Timber architrave to floor. Single-leaf timber door with five panels having horizontal panel to top rail. No door knob.
- Windows: Square-headed window opening in the west wall. Timber architrave to cill set over projecting apron. Flat reveals with timber folding leaf shutters (over-painted) having three panels each. Flat soffit. Timber casement window c.1990.
- Ceiling: Plaster ceiling. Bakelite light fitting.
- Features: Projecting chimney breast to the west wall with over-painted cast-iron fireplace.  
  
Modern sink unit to south wall.



Fig.111: Aspect of room taken from the southeast.



Fig.112: Early timber window joinery. Note the architrave rests on a projecting window apron.



Fig.113: Single-leaf timber panelled door giving access to G24.



Fig.114: Cast-iron fireplace to west wall.

### 3.26 Room G26

Location: South facing room located within the south wing.

- Floors: Linoleum over concrete floor.
- Walls: Bull nose skirting. Wallpaper over plaster walls.
- Doors: Square-headed doorway in north wall giving access to G22. Timber architrave to floor. Single-leaf timber door with five panels having horizontal panel to top rail. No door knob.
- Windows: Square-headed window opening in the south wall. Timber architrave to cill. Flat reveals with timber folding leaf shutters (over-painted) having three panels each. Flat soffit. Timber casement window c.1990.
- Ceiling: Papered ceiling (over plaster). Bakelite light fitting.
- Features: Projecting chimney breast to the east wall having painted stone surround and partial remains of timber mantel shelf. Originally conceived with a round-headed opening now altered to form a square-headed opening.
- Modern sink unit to the south wall.



Fig.115: Aspect of room taken from the southwest.



Fig.116: Timber door with five panels giving access to G22.





### 3.27 Room G27

Location: South facing room located within the south wing.

Floors: Linoleum over limestone flag floor.

Walls: Bull nose skirting. Wallpaper over plaster walls.

Doors: Square-headed doorway in north wall giving access to G22. Timber architrave to floor. Single-leaf timber door with five panels having horizontal panel to top rail. Brass door knob.

Square-headed doorway in east wall giving access to closet. Timber architrave to floor. Single-leaf timber door with five panels having horizontal panel to top rail. Timber door knob.

Windows: Square-headed window opening in the south wall. Timber architrave to cill. Window shutters removed. Flat soffit. Timber casement window c.1990.

Ceiling: Papered and plastered ceiling.

Features: Cast-iron fireplace to east wall.

Closet built into east wall having three timber shelves.

Modern sink unit to the south wall.



Fig.119: Aspect of room taken from the northwest.



Fig.120: Single-leaf timber panelled door giving access to G22.



Fig.121: Window opening showing timber architrave.



Fig.122: Cast-iron fireplace to east wall.

### 3.28 Room G28

Location: South facing room located within the south wing.

Floors: Linoleum over concrete floor.

- Walls:** Bull nose skirting. Wallpaper over plaster walls.  
Dry lining to south wall.
- Doors:** Square-headed doorway in north wall giving access to G22. Timber architrave to floor. Single-leaf timber door with five panels having horizontal panel to top rail. Brass door knob.
- Windows:** Square-headed window opening in the south wall. Timber architrave to cill. Flat reveals with timber folding leaf shutters (over-painted) having three panels each. Flat soffit. Timber casement window c.1990.
- Ceiling:** Paper and plastered ceiling.
- Features:** Projecting chimney breast to the west wall having painted stone surround and timber mantel shelf. Originally conceived with a round-headed opening now altered to form a square-headed opening.  
Modern sink unit to the south wall.



Fig.123: Aspect of room taken from the northwest.



Fig.124: Timber panelled door giving access to G22.

	
<p>Fig.125: Window opening with surviving timber joinery. Note the replacement casement window.</p>	<p>Fig.126: Painted stone fireplace with timber mantel shelf.</p>

### 3.29 Room G29

- Location:** West facing room located within the south wing.
- Floors:** Linoleum over concrete floor.
- Walls:** Bull nose skirting. Wallpaper over plaster walls.
- Doors:** Square-headed doorway in north wall giving access to G22. Timber architrave to floor. Single-leaf timber door with five panels having horizontal panel to top rail. Bakelite door knob.
- Square-headed doorway in north wall giving access to G10. Timber architrave to floor. Single-leaf timber door with five panels having horizontal panel to top rail. No door knob.
- Windows:** Square-headed window opening in the west wall. Timber architrave to cill set over projecting apron (papered over). Flat reveals with timber folding leaf shutters (over-painted) having three panels each. Flat soffit. Timber casement window c.1990.
- Ceiling:** Plaster and painted ceiling. Bakelite light fitting.
- Features:** Projecting chimney breast to the east wall with cast-iron fireplace.
- Modern sink unit to the south wall.



Fig.127: Aspect of room taken from the southwest.



Fig.128: Single-leaf timber panelled door giving access to G22.



Fig.129: Window opening with surviving timber joinery. Note the replacement casement window.



Fig.130: Cast-iron fireplace to east wall.

### 3.30 Room F01

Location: West facing room located within the north wing.

- Floors: Linoleum over timber floorboards running north-south.
- Walls: Bull nose skirting. Wallpaper over plaster walls to south and east. Dry-lining to north and west walls.
- Doors: Square-headed doorway in south wall giving access to F08. Timber architrave to floor. Single-leaf timber door with four panels. No door knob.  
Square-headed doorway in south wall giving access to F10. Timber architrave to floor. Single-leaf timber door with four panels. No door knob.
- Windows: Square-headed window opening in the west wall. Timber architrave to cill set over projecting apron. Flat reveals with timber folding leaf shutters (over-painted) having three panels each. Flat soffit. Timber casement window c.1990.
- Ceiling: Paper over plaster ceiling. Bakelite light fitting.
- Features: Projecting chimney breast to the east wall with modern tiled fireplace and hearth (over early limestone hearth stone).



Fig.131: Aspect of room taken from the northwest.

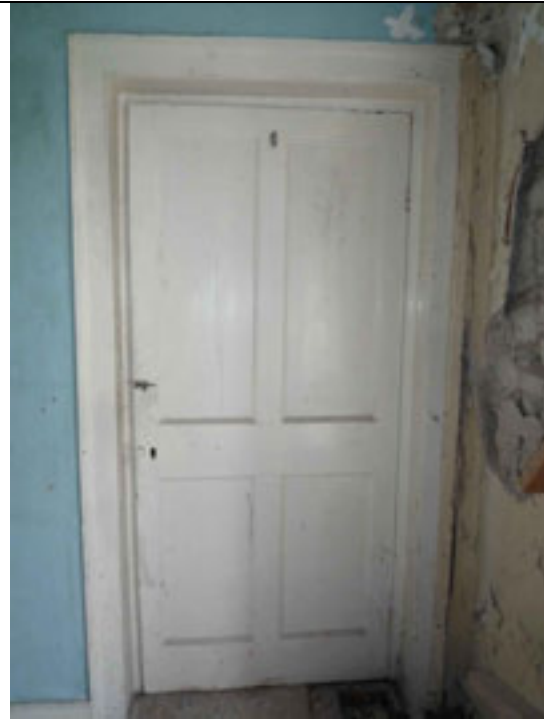


Fig.132: Single-leaf timber panelled door giving access to F10.

	
<p>Fig.133: Window opening with early timber joinery including panelled shutters, architrave and apron panel.</p>	<p>Fig.134: Fireplace to east wall having modern tiled fireplace over the existing limestone hearth.</p>

### 3.31 Room F02

**Location:** North facing room located within the north wing.

**Floors:** Timber floorboards running north-south.

**Walls:** Bull nose skirting. Plaster and painted walls.

**Doors:** Square-headed doorway in south wall giving access to F08. Timber architrave to floor. Single-leaf timber door with four panels. Timber door knob.

**Windows:** Square-headed window opening in the north wall. Timber architrave to cill. Flat reveals with timber folding leaf shutters (over-painted) having three panels each. Missing shutter to west reveal. Flat soffit. Timber casement window c.1990.

**Ceiling:** Plaster and painted ceiling. Bakelite light fitting.

**Features:** Projecting chimney breast to the west wall having painted stone surround with spandrels and timber mantel shelf. Hob grate.



Fig.135: Aspect of room taken from the northeast.



Fig.136: Timber panelled door giving access to F08.



Fig.137: Window opening with surviving timber joinery. Note the shutter to the left is missing.



Fig.138: Painted stone fireplace with spandrels (painted white) and hob grate.

### 3.32 Room F03

Location: North facing room located within the north wing.



- Floors:** Timber floorboards running north-south.
- Walls:** Bull nose skirting. Wallpaper over plaster walls.
- Doors:** Square-headed doorway in south wall giving access to F08. Timber architrave to floor. Single-leaf timber door with four panels. Brass door knob.
- Square-headed doorway in east wall giving access to closet. Timber architrave to floor. Single-leaf timber door with four panels. No door knob.
- Windows:** Square-headed window opening in the north wall. Timber architrave to cill. Flat reveals with timber folding leaf shutters (over-painted) having three panels each. Flat soffit. Timber casement window c.1990.
- Ceiling:** Plaster and painted ceiling. Bakelite light fitting.
- Features:** Fireplace to east wall having painted stone surround with spandrels and timber mantel shelf. Hob grate.
- Closet built into east wall having three timber shelves.



Fig.139: Aspect of room taken from the southwest.



Fig.140: Single-leaf timber panelled door giving access to F08.



Fig.141: Window opening showing timber panelled shutters.



Fig.142: Fireplace to east wall having painted stone surround, timber mantel shelf, spandrels and hob grate.

### 3.33 Room F04

Location: North facing room located within the north wing.

Floors: Linoleum and carpet over timber floorboards running north-south.

Walls: Bull nose skirting. Wallpaper over plaster walls.

Doors: Square-headed doorway in south wall giving access to F08. Timber architrave to floor. Single-leaf timber door with four panels. Timber door knob.

Windows: Square-headed window opening in the north wall. Timber architrave to cill. Flat reveals with timber folding leaf shutters having three panels each. Flat soffit. Timber casement window c.1990.

Ceiling: Plaster and painted ceiling. Bakelite light fitting.

Features: Projecting chimney breast to the east wall having painted stone surround with spandrels and timber mantel shelf. Modern tiled hearth and insert.



Fig.143: Aspect of room taken from the northwest.



Fig.144: Timber door with four panels giving access to F08.



Fig.145: Window opening with surviving timber shutters.



Fig.146: Painted stone fireplace with modern insert.

### 3.34 Room F05

Location: East facing room located within the north wing.

Floors: Linoleum over timber floorboards running north-south.

- Walls:** Bull nose skirting. Wallpaper over plaster walls.
- Doors:** Square-headed doorway in south wall giving access to F08. Timber architrave to floor. Single-leaf timber door with four panels. Timber door knob.
- Square-headed doorway in south wall giving access to F06. Timber architrave to floor. Single-leaf timber door with four panels. Timber door knob.
- Windows:** Square-headed window opening in the east wall. Timber architrave to cill (projecting apron missing). Flat reveals with timber folding leaf shutters (over-painted) having three panels each. Flat soffit. Timber casement window c.1990.
- Ceiling:** Papered ceiling (over plaster). Bakelite light fitting.
- Features:** Projecting chimney breast to the west wall having painted stone surround with spandrels and timber mantel shelf. Hob grate and cast-iron fender.



Fig.147: Aspect of room taken from the northeast.



Fig.148: Single-leaf timber panelled door giving access to F08.

	
<p>Fig.149: Early timber window joinery. Note the projecting window apron is missing.</p>	<p>Fig.150: Painted stone fireplace with hob grate and cast-iron fender.</p>

### 3.35 Room F06

- Location: Store located within the north wing.
- Floors: Floorboards missing. Joists running north-south.
- Walls: Plaster walls.
- Doors: Square-headed doorway in north wall giving access to F05. Single-leaf timber door with four raised-and-fielded panels. No door knob.
- Windows: None.
- Ceiling: Plaster and painted ceiling.
- Features: Two timber shelves.



### 3.36 Room F07

- Location: Store located within the north wing.
- Floors: Timber floorboards running east-west.
- Walls: Plaster and painted walls.
- Doors: Square-headed doorway in west wall giving access to F08. Single-leaf timber door with four raised-and-fielded panels. No door knob.
- Windows: None.
- Ceiling: Plaster and painted ceiling.
- Features: Timber shelf.



### 3.37 Room F08

Location: South facing corridor located within the north wing.

Floors: Timber floorboards running east-west.

Walls: Bull nose skirting. Plaster walls.

Doors: Square-headed doorway in north wall giving access to F01. Timber architrave to floor. Single-leaf timber door with four panels. No door knob.

Square-headed doorway in north wall giving access to F02. Timber architrave to floor. Single-leaf timber door with four panels. Timber door knob.

Square-headed doorway in north wall giving access to F03. Timber architrave to floor. Single-leaf timber door with four panels. Timber door knob.

Square-headed doorway in north wall giving access to F04. Timber architrave to floor. Single-leaf timber door with four panels. Timber door knob.

Square-headed doorway in north wall giving access to F05. Timber architrave to floor. Single-leaf timber door with four panels. Timber door knob.

Square-headed doorway in east wall giving access to F07. Timber architrave to floor. Single-leaf timber door with four panels. No door knob.

Square-headed doorway in south wall giving access to F11. Timber architrave to floor. Double-leaf timber door with two panels each. Bakelite door knob.

Square-headed doorway in west wall giving access to F09. Timber architrave to floor. Single-leaf timber door with four panels having glazing to top panels. No door knob.

Former window opening to the south wall altered for use as fire escape exit c.1990 having timber and glazed single-leaf doors with glazed overlights.

Windows: Square-headed window opening in the south wall. Timber architrave to cill. Flat reveals with timber folding leaf shutters (over-painted) having three panels each. Flat soffit. Timber casement window c.1990.

Ceiling: Plaster ceiling. Bakelite light fitting.

Features: Belfast sink to south wall.



Fig.155: Aspect of corridor taken from the west.



Fig.156: Double-leaf doors giving access to F11.



	
<p>Fig.157: Window opening with timber shutters and architrave.</p>	<p>Fig.158: Belfast sink to south wall.</p>

### 3.38 Room F09

- Location: W.C. located within the north wing.
- Floors: Linoleum over timber floorboards running east-west.
- Walls: Plaster walls.
- Doors: Square-headed doorway in west wall giving access to F08. Timber architrave to floor. Single-leaf timber door with four panels having glazing to top panels. No door knob.
- Windows: None.
- Ceiling: Plaster and painted ceiling. Attic hatch.
- Features: Toilet with overhead wall-mounted cistern.  
Vent grill to south wall.



Fig.159: Toilet to G09.



Fig.160: Single-leaf timber panelled door with glazing top panels.

### 3.39 Room F10

Location: Store located within the north wing.

Floors: Timber floorboards running east-west.

Walls: Plaster walls. Plywood to the south and east walls.

Doors: Square-headed doorway in north wall giving access to F01. Single-leaf timber door with four raised and fielded panels. No door knob.

Windows: None.

Ceiling: Plaster and painted ceiling.

Features: Timber shelf.



### 3.40 Room F11

**Location:** Apsidal landing located within the central block having a cantilevered staircase rising from ground to first floor.

**Floors:** Timber floorboards running east-west.

**Walls:** Bull nose skirting. Plaster and painted walls.

**Doors:** Square-headed doorway in north wall giving access to F08. Timber architrave to floor. Double-leaf timber door with two panels each. Bakelite door knob.

Square-headed doorway in south wall giving access to G12. Timber architrave to floor. Double-leaf timber door with four panels each. Brass door knob.

**Windows:** Square-headed window opening in the west wall. Timber architrave to cill resting on projecting window apron. Flat reveals and soffit. Timber casement window c.1990.

Square-headed window opening in the east wall. Timber architrave to cill following the curve of the room. Flat reveals and soffit with splayed cill. Timber six-over-six sliding sash windows without horns.

**Ceiling:** Plaster ceiling.

**Features:** Cantilevered limestone staircase with open strings ascending from ground to first floor. Wrought-iron balusters and curved volute newel supporting a metal handrail.



Fig.163: Aspect of landing taken from the west.

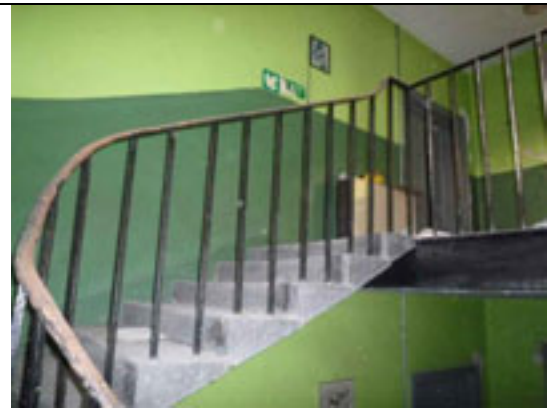


Fig.164: Cantilevered staircase rising from ground to first floor.



Fig.165: Window opening in the west wall with timber architrave and shutters.



Fig.166: Window opening in the east wall with early timber sash window. Note the architrave follows the curve of the room.

### 3.41 Room F12

Location: West facing corridor located within the central block.

Floors: Linoleum over timber floorboards running east-west.

Walls: Bull nose skirting. Plaster and painted walls.

Doors: Square-headed doorway in north wall giving access to F11. Timber architrave to floor. Double-leaf timber door with two panels each. Brass door knob.

Square-headed doorway in east wall giving access to F13. Single-leaf timber door with four panels. Brass door knob.

Square-headed doorway in south wall giving access to F14. Timber architrave to floor. Single-leaf timber door with four panels. Brass door knob.

Windows: Square-headed window opening in the west wall. Timber architrave to cill. Flat reveals with timber folding leaf shutters (over-painted) having three panels each. Flat soffit. Timber casement window c.1990.

Ceiling: Plaster ceiling. Bakelite light fitting.

Features: Timber book shelves to all walls.



Fig.167: Aspect of corridor taken from the south.

Fig.168: Timber window joinery with working folding leaf shutters.

### 3.42 Room F13

Location: East facing room located within the central block.

Floors: Linoleum timber floorboards running east-west.

Walls: Bull nose skirting. Plaster walls.

Doors: Square-headed doorway in west wall giving access to F12. Single-leaf timber door with four panels. Brass door knob.

Windows: Square-headed window opening in the east wall. Timber architrave to cill. Flat reveals with timber folding leaf shutters (over-painted) having three panels each. Flat soffit. Timber six-over-six sliding sash windows without horns.

Ceiling: Plaster ceiling. Bakelite light fitting and modern strip lighting.

Features: Projecting chimney breast to the south wall. Possible fireplace concealed behind timber shelving.

Timber book shelves.



Fig.196: Aspect of room taken from the west.

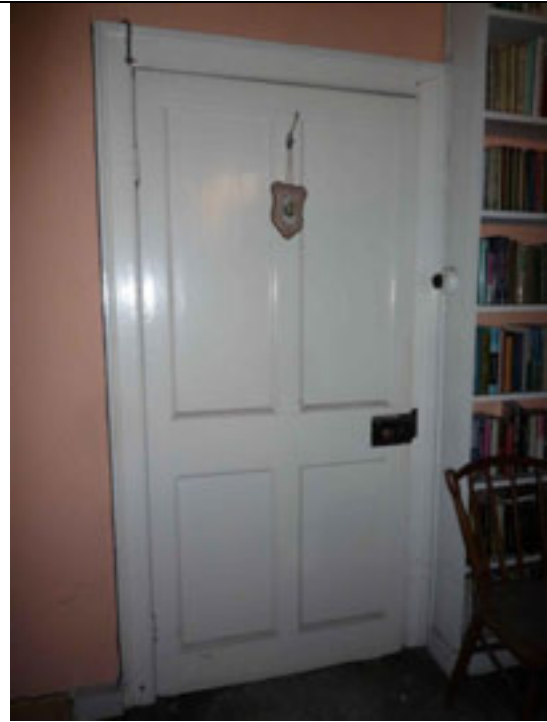


Fig.170: Single-leaf door giving access to F12.



Fig.171: Early timber sliding sash window and associated joinery.



Fig.172: Fireplace possibly concealed behind bookshelves.

### 3.43 Room F14

- Location:** Dual aspect room located within the central block with opes fronting on to the east and west.
- Floors:** Timber floorboards running east-west.
- Walls:** Bull nose skirting. Plaster walls.
- Doors:** Square-headed doorway in north wall giving access to F12. Timber architrave to floor. Single-leaf timber door with four panels. Brass door knob.
- Windows:** Square-headed window opening in the east wall. Timber architrave to cill. Flat reveals with timber folding leaf shutters (over-painted) having three panels each. Flat soffit. Timber six-over-six sliding sash windows without horns.
- Square-headed window opening in the west wall. Timber architrave to cill. Flat reveals with timber folding leaf shutters (over-painted) having three panels each. Flat soffit. Timber casement window c.1990.
- Ceiling:** Plaster ceiling. Bakelite light fitting and modern strip lighting.
- Features:** Projecting chimney breast to the north wall with tiled fireplace c.1970 having a stepped mantel.
- Timber book shelves.



Fig.173: Aspect of room taken from the southwest.



Fig.174: Single-leaf door giving access to F12.

	
<p>Fig.175: Window opening to the east wall with early window joinery and early timber sash window.</p>	<p>Fig.176: Tiled fireplace with stepped mantel.</p>

### 3.44 Room F15

**Location:** Dual aspect room located within the central block with opes fronting on to the east and west.

**Floors:** Linoleum over timber floorboards running east-west.

**Walls:** Bull nose skirting. Plaster walls with drying lining to west wall.

**Doors:** Square-headed doorway in south wall giving access to F16. Timber architrave to floor. Single-leaf timber door with four panels. Bakelite door knob.

**Windows:** Square-headed window opening in the east and west walls. Timber architrave to cill. Flat reveals with timber folding leaf shutters (over-painted) having three panels each. Flat soffit. Timber casement window c.1990.  
**Ceiling:**

Plaster ceiling. Bakelite light fitting and modern strip lighting.

**Features:** Projecting chimney breast to the south wall. Modern tiled fireplace.





Fig.177: Aspect of room taken from the southwest.



Fig.178: Timber panelled door in the south wall giving access to room F16.



Fig.179: Window opening with early joinery to east wall.



Fig.180: Window opening with early joinery to west wall.

### 3.45 Room F16

Location: West facing corridor located within the central block.

Floors: Timber floorboards running east-west.

- Walls:** Bull nose skirting. Paper over plastered walls.
- Doors:** Square-headed doorway in north wall giving access to F15. Timber architrave to floor. Single-leaf timber door with four panels. Bakelite door knob.
- Square-headed doorway in west wall giving access to G17. Timber architrave to floor. Single-leaf timber door with four panels. Bakelite door knob.
- Square-headed doorway in south wall giving access to F18. Timber architrave to floor. Double-leaf timber door with two panels each. Timber door knob.
- Windows:** Square-headed window opening in the west wall. Timber architrave to cill. Flat reveals with timber folding leaf shutters (over-painted) having three panels each. Flat soffit. Timber casement window c.1990.
- Ceiling:** Plaster ceiling. Bakelite light fitting.
- Features:** None.



### 3.46 Room F17

- Location:** East facing room located within the central block.
- Floors:** Floorboards running east-west.
- Walls:** Paper over plaster walls.
- Doors:** Square-headed doorway in west wall giving access to F16. Timber architrave to floor. Single-leaf timber door with four panels. Bakelite door knob.

- Windows: Square-headed window opening in the east wall. Timber architrave to cill. Flat reveals with timber folding leaf shutters (over-painted) having three panels each. Flat soffit. Timber casement window c.1990.
- Ceiling: Plaster ceiling. Bakelite light fitting.
- Features: Projecting chimney breast to the south wall having painted stone surround with spandrels. Blocked-up opening.  
Built-in timber kitchen units.



Fig.183: Aspect of room taken from the west.



Fig.184: Single-leaf door giving access to F16.

	
<p>Fig.185: Early timber window joinery - note the inappropriate casement window.</p>	<p>Fig.186: Painted stone fire surround with blocked opening.</p>

### 3.47 Room F18

- Location:** Apsidal landing located within the central block having a cantilevered staircase rising from ground to first floor.
- Floors:** Linoleum over timber floorboards running east-west.
- Walls:** Bull nose skirting. Plaster and painted walls.
- Doors:** Square-headed doorway in north wall giving access to F16. Timber architrave to floor. Double-leaf timber door with two panels each. Timber door knob.
- Square-headed doorway in south wall giving access to G21. Timber architrave to floor. Double-leaf timber door with four panels each. Bakelite door knob.
- Windows:** Square-headed window opening in the west wall. Timber architrave to cill. Flat reveals and soffit. Timber casement window c.1990.
- Square-headed window opening in the east wall. Timber architrave to cill following the curve of the room. Flat reveals and soffit with splayed cill resting on projecting window apron. Timber casement window c.1990.
- Ceiling:** Plaster ceiling.
- Features:** Cantilevered limestone staircase with open strings ascending from ground to first floor. Wrought-iron balusters and curved volute newel supporting a metal handrail.

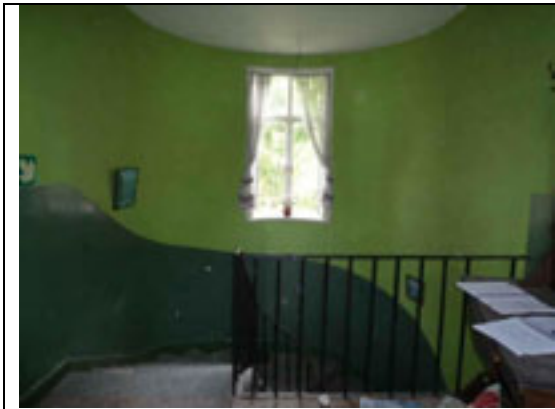


Fig.187: Aspect of landing taken from the west.

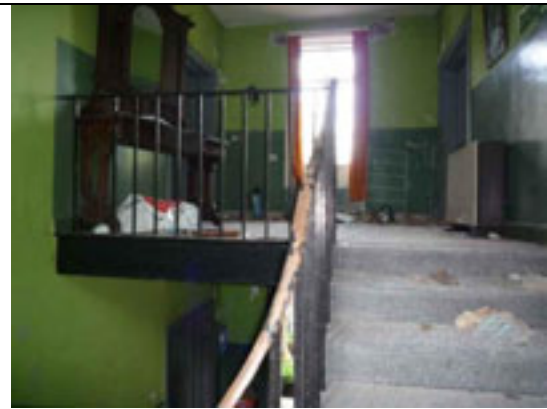


Fig.188: Aspect of landing taken from the east.



Fig.189: Window opening in the west wall with timber architrave and shutters.



Fig.190: Window opening in the east wall. Note the architrave follows the curve of the room.

### 3.48 Room F19

Location: Store located within the south wing.

Floors: Missing floorboards. Timber joists running north-south.

Walls: Plaster walls.

Doors: Square-headed doorway in south wall giving access to F28. Single-leaf timber door with five raised-and-fielded panels. No door knob.

Windows: None.

Ceiling: Plaster and painted ceiling.

Features: Two timber shelves.



Fig.191: Aspect of store taken from the south.

Fig.192: Single-leaf door giving access to F28.

### 3.49 Room F20

Location: W.C. located within the south wing.

Floors: Linoleum over timber floorboards running east-west.

Walls: Papered and plastered walls.

Doors: Square-headed doorway in west wall giving access to F21. Timber architrave to floor. Single-leaf timber door with four raised-and-fielded panels having glazing to top panels. No door knob.

Windows: None.

Ceiling: Plaster and painted ceiling.

Features: Toilet.

Vent grill to north wall.



Fig.193: Aspect of room taken from the east.



Fig.194: Single-leaf timber panelled door with glazing giving access to F21.

### 3.50 Room F21

Location: North facing corridor located within the south wing.

Floors: Linoleum over timber floorboards running east-west.

Walls: Bull nose skirting. Plaster walls.

Doors: Square-headed doorway in south wall giving access to F28. Timber architrave to floor. Single-leaf timber door with four panels. Bakelite door knob.

Square-headed doorway in south wall giving access to F27. Timber architrave to floor. Single-leaf timber door with four panels. Timber door knob.

Square-headed doorway in south wall giving access to F26. Timber architrave to floor. Single-leaf timber door with four panels. Timber door knob.

Square-headed doorway in south wall giving access to F25. Timber architrave to floor. Single-leaf timber door with four panels. Timber door knob.

Square-headed doorway in south wall giving access to F24. Timber architrave to floor. Single-leaf timber door with four panels. Bakelite door knob.

Square-headed doorway in north wall giving access to F22. Timber architrave to floor. Single-leaf timber door with four panels (having been drilled to facilitate air movement). No door knob.

Square-headed doorway in east wall giving access to F20. Timber architrave to floor. Single-leaf timber door with four raised-and-fielded panels having glazing to top panels. No door knob.

Square-headed doorway in north wall giving access to F18. Timber architrave to floor. Double-leaf timber door with two panels each. Bakelite door knob.

Former window opening in the north wall altered for use as fire escape exit c.1990 having timber and glazed single-leaf doors with glazed overlights.

Windows: Square-headed window opening in the north wall. Timber architrave to cill. Flat reveals with timber folding leaf shutters (over-painted) having three panels each. Flat soffit. Timber casement window c.1990.

Ceiling: Plaster ceiling. Bakelite light fitting.

Features: Belfast sink to north wall.

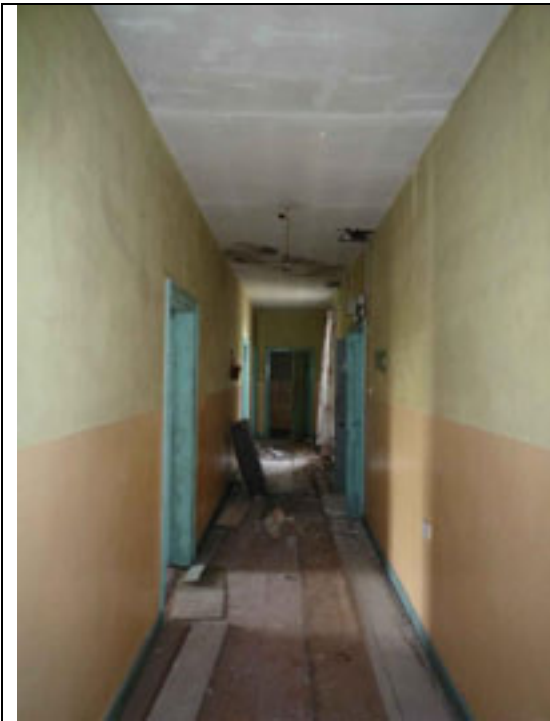


Fig.195: Aspect of corridor taken from the east.



Fig.196: Double-leaf door giving access to F13.





### 3.51 Room F22

- Location: Store located within the south wing.
- Floors: Linoleum over timber floorboards running east-west.
- Walls: Bull nose skirting. Plaster walls.
- Doors: Square-headed doorway in west wall giving access to F21. Single-leaf timber door with four raised-and-fielded panels (having been drilled to facilitate air movement). No door knob.
- Windows: None.
- Ceiling: Plaster and painted ceiling.
- Features: Three timber shelves.



### 3.52 Room F23

- Location: Store located within the south wing.
- Floors: Timber floorboards running east-west.
- Walls: Plaster walls.
- Doors: Square-headed doorway in south wall giving access to F24. Single-leaf timber door with four raised-and-fielded panels. No door knob.
- Windows: None.
- Ceiling: Plaster and painted ceiling.
- Features: Two timber shelves.



### 3.53 Room F24

- Location:** East facing room located within the south wing.
- Floors:** Linoleum over timber floorboards running north-south.
- Walls:** Bull nose skirting. Wallpaper over plaster walls.
- Doors:** Square-headed doorway in north wall giving access to F21. Timber architrave to floor. Single-leaf timber door with four panels. Bakelite door knob.  
Square-headed doorway in north wall giving access to F23. Timber architrave to floor. Single-leaf timber door with four panels. No door knob.
- Windows:** Square-headed window opening in the west wall. Timber architrave to cill set over projecting apron (missing timber joinery). Flat reveals with timber folding leaf shutters (over-painted) having three panels each. Flat soffit. Timber casement window c.1990.
- Ceiling:** Plaster ceiling. Bakelite light fitting.
- Features:** Projecting chimney breast to the west wall having painted stone surround with spandrels and modern tiled insert.



Fig.203: Aspect of room taken from the southeast.

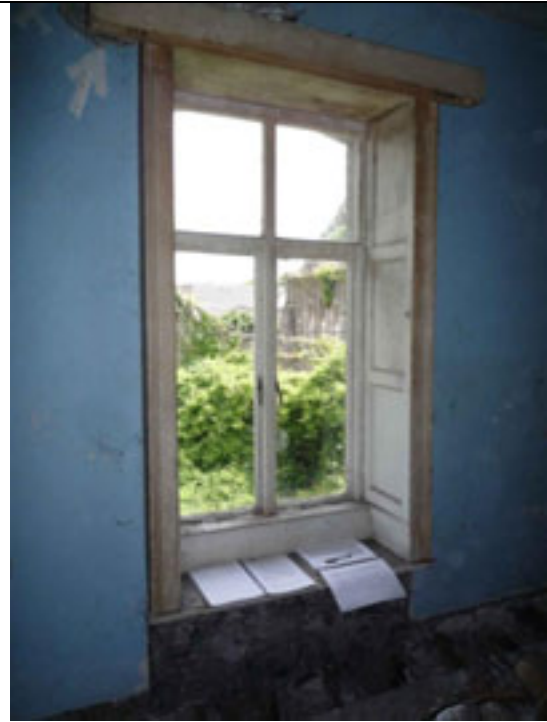


Fig.204: Early timber window joinery. Note the architrave rests on a projecting window apron.



Fig.205: Single-leaf timber panelled door giving access to F21.



Fig.206: Over-painted stone fireplace with modern tiled insert.

### 3.54 Room F25

Location: East facing room located within the south wing.

- Floors: Linoleum over timber floorboards running north-south.
- Walls: Bull nose skirting. Wallpaper over plaster walls.
- Doors: Square-headed doorway in north wall giving access to F21. Timber architrave to floor. Single-leaf timber door with four panels. Timber door knob.
- Windows: Square-headed window opening in the west wall. Timber architrave to cill. Flat reveals with timber folding leaf shutters (over-painted) having three panels each. Flat soffit. Timber casement window c.1990.
- Ceiling: Plaster ceiling. Bakelite light fitting.
- Features: Projecting chimney breast to the east wall having modern fireplace c.1970.



Fig.207: Aspect of room taken from the southwest.



Fig.208: Aspect of room taken from the northwest.



Fig.209: Timber door with five panels giving access to F21.



Fig.210: Window opening with surviving timber joinery.

### 3.55 Room F26

- Location:** East facing room located within the south wing.
- Floors:** Linoleum over timber floorboards running north-south.
- Walls:** Bull nose skirting. Wallpaper over plaster walls. Dry lining to the south wall.
- Doors:** Square-headed doorway in north wall giving access to F21. Timber architrave to floor. Single-leaf timber door with four panels. Timber door knob.  
Square-headed doorway in east wall giving access to closet. Timber architrave to floor. Single-leaf timber door with four panels. No door knob.
- Windows:** Square-headed window opening in the west wall. Timber architrave to cill. Flat reveals with timber folding leaf shutters (over-painted) having three panels each. Flat soffit. Timber casement window c.1990.
- Ceiling:** Plaster ceiling. Bakelite light fitting.
- Features:** Fireplace to east wall having painted stone surround with spandrels, timber mantel shelf and cast-iron insert.



Fig.211: Aspect of room taken from the northwest.



Fig.212: Single-leaf timber panelled door giving access to F21.

	
<p>Fig.213: Closet to the east wall.</p>	<p>Fig.214: Cast-iron fireplace to east wall.</p>

### 3.56 Room F27

- Location:** South facing room located within the south wing.
- Floors:** Carpet over floorboards running north-south.
- Walls:** Bull nose skirting. Wallpaper over plaster walls. Dry lining to south wall and part of west wall.
- Doors:** Square-headed doorway in north wall giving access to F21. Timber architrave to floor. Single-leaf timber door with four panels. Timber door knob.
- Windows:** Square-headed window opening in the south wall. Timber architrave to cill (partially obscured by dry lining). Flat reveals with timber folding leaf shutters (over-painted) having three panels each. Flat soffit. Timber casement window c.1990.
- Ceiling:** Plastered ceiling. Bakelite light fitting.
- Features:** Projecting chimney breast to the west wall having modern tiled fireplace c.1960.  
Built-in timber coal store to the northwest corner of room.

	
<p>Fig.215: Aspect of room taken from the northeast.</p>	<p>Fig.216: Aspect of room taken from the southeast.</p>
	
<p>Fig.217: Timber panelled door giving access to G22.</p>	<p>Fig.218: Window opening with surviving timber joinery. Note the replacement casement window.</p>

**3.57 Room F28**

- Location: West facing room located within the south wing.
- Floors: Linoleum over timber floorboards running north-south.
- Walls: Bull nose skirting. Wallpaper over plaster walls. Dry lining to the south and west walls.
- Doors: Square-headed doorway in north wall giving access to F21. Timber architrave to floor. Single-leaf timber door with four panels. Bakelite door knob.



Square-headed doorway in north wall giving access to F19. Timber architrave to floor. Single-leaf timber door with four panels. No door knob.

Windows: Square-headed window opening in the west wall. Timber architrave to cill. Projecting timber apron missing. Flat reveals with timber folding leaf shutters (over-painted) having three panels each. Flat soffit. Timber casement window c.1990.

Ceiling: Plaster and painted ceiling. Bakelite light fitting.

Features: Projecting chimney breast to the east wall having painted stone surround with spandrels and timber mantel shelf. Modern brick infill to fireplace.



Fig.219: Aspect of room taken from the southwest.



Fig.220: Single-leaf timber panelled door giving access to F21.



Fig.221: Window opening with surviving timber joinery. Note the replacement casement window.



Fig.222: Over-painted stone fireplace to east wall.

## **APPENDIX 1 - LOCATION PLANS**